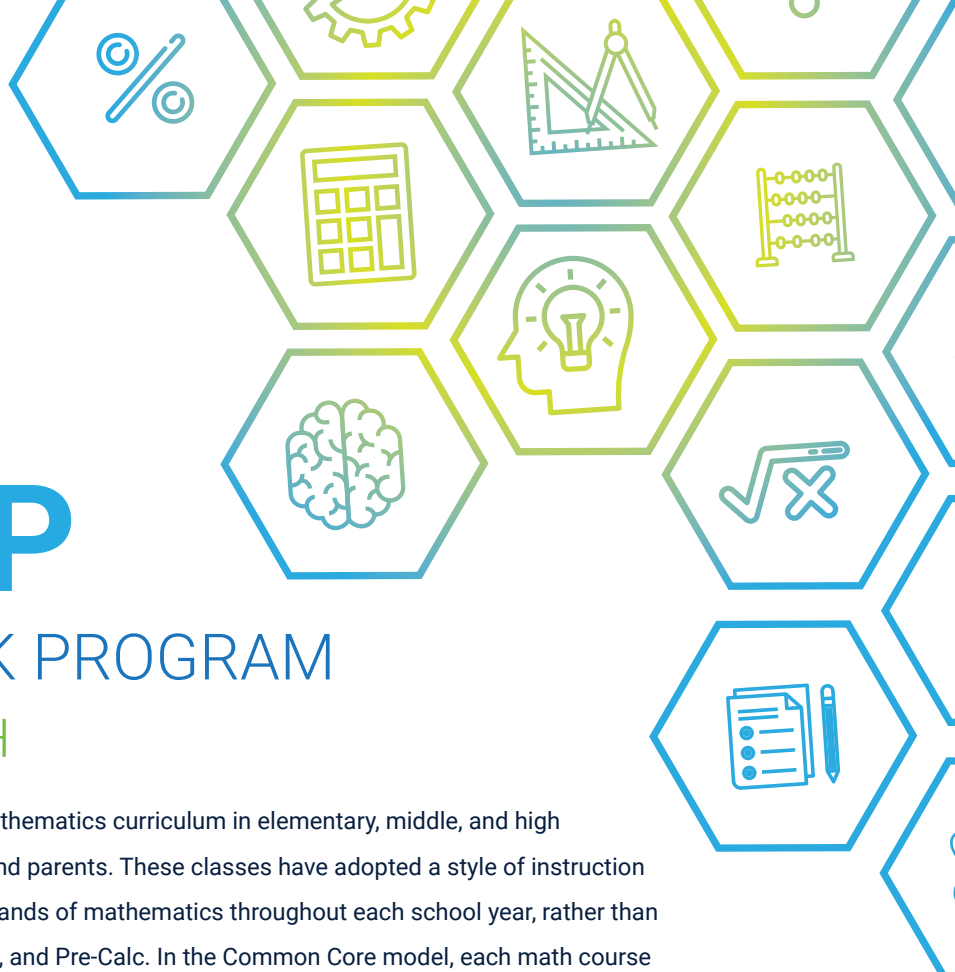


Location: Carmel Valley Office

11250 El Camino Real, Suite 105

San Diego, CA 92130



MATH EXP

2018 SUMMER 8-WEEK PROGRAM

JUNE 19TH - AUGUST 10TH

Over the last few years, the introduction of Common Core mathematics curriculum in elementary, middle, and high schools has been a source of confusion for many students and parents. These classes have adopted a style of instruction called "Integrated Math," which weaves together the many strands of mathematics throughout each school year, rather than teaching discrete subjects like Algebra I, Geometry, Algebra II, and Pre-Calc. In the Common Core model, each math course covers many or all of these topics, presented in real-world contexts with the intent of developing deeper meaning for mathematics.

The Hamilton College Consulting Mathematics series offers introduction, enrichment, and enhancement to the course structures students will encounter as they transition through their middle and high school education stream, from pre-middle (5th-6th) to middle (7th-8th) to their 9th, 10th, and 11th grade experiences (integrated Math I to III). Twice a week, students will meet with our senior math instructors for 2 hours to receive the guidance they need to boost their performance and confidence in their understanding of math.

MATH A HONORS: 5TH/6TH GRADE

Wednesdays and Fridays

9:00 AM – 11:00 AM

MATH B HONORS: 7TH/8TH GRADE

Tuesdays and Thursdays

9:00 AM – 11:00 AM

Tuesdays and Thursdays

4:30 PM – 6:30 PM

INTEGRATED MATH I

Wednesdays and Fridays

2:30 PM – 4:30 PM

Wednesdays and Fridays

4:30 PM – 6:30 PM

INTEGRATED MATH II

Tuesdays and Thursdays

4:30 PM – 6:30 PM

INTEGRATED MATH III

Wednesdays and Fridays

4:30 PM – 6:30 PM

PRE-CALCULUS

Tuesdays and Thursdays

2:30 PM – 4:30 PM

Each 8-week course is priced at **\$650**

A discount will be given for students enrolled in both **Math EXP** and **PSAT** or **Brainiacs**.

These classes DO NOT confer course credit and DO NOT replace high school math classes. No refunds and pro-rates available for this program.

Location: 4S Ranch

10801 Thornmint Road, Suite 100

San Diego, CA 92127

MATH EXP

2018 SUMMER 8-WEEK PROGRAM

JUNE 19TH - AUGUST 10TH

Over the last few years, the introduction of Common Core mathematics curriculum in elementary, middle, and high schools has been a source of confusion for many students and parents. These classes have adopted a style of instruction called "Integrated Math," which weaves together the many strands of mathematics throughout each school year, rather than teaching discrete subjects like Algebra I, Geometry, Algebra II, and Pre-Calc. In the Common Core model, each math course covers many or all of these topics, presented in real-world contexts with the intent of developing deeper meaning for mathematics.

The Hamilton College Consulting Mathematics series offers introduction, enrichment, and enhancement to the course structures students will encounter as they transition through their middle and high school education stream, from pre-middle (5th-6th) to middle (7th-8th) to their 9th, 10th, and 11th grade experiences (integrated Math I to III). Twice a week, students will meet with our senior math instructors for 2 hours to receive the guidance they need to boost their performance and confidence in their understanding of math.

MATH A HONORS: 5TH/6TH GRADE

Wednesdays and Fridays

9:00 AM – 11:00 AM

MATH B HONORS: 7TH/8TH GRADE

Tuesdays and Thursdays

9:00 AM – 11:00 AM

Tuesdays and Thursdays

4:30 PM – 6:30 PM

INTEGRATED MATH I

Wednesdays and Fridays

2:30 PM – 4:30 PM

Wednesdays and Fridays

4:30 PM – 6:30 PM

INTEGRATED MATH II

Tuesdays and Thursdays

4:30 PM – 6:30 PM

INTEGRATED MATH III

Wednesdays and Fridays

4:30 PM – 6:30 PM

PRE-CALCULUS

Tuesdays and Thursdays

2:30 PM – 4:30 PM

Each 8-week course is priced at **\$650**

A discount will be given for students enrolled in both **Math EXP** and **PSAT** or **Brainiacs**.

These classes **DO NOT** confer course credit and **DO NOT** replace high school math classes. No refunds and pro-rates available for this program.